

Publications

Publications

IKT Research & Testing 2014-2016



DIN A4, 68 pages

May 2016

[Comparative test: Coating for a watertight manhole shaft](#)

[Comparative test: Repair methods for lateral connections](#)

[IKT LinerReport 2015: Slight disappointment on wall thickness](#)

[Stability of Manholes: A new application for the MAC System?](#)

[Inspecting pressure sewer pipes: Potential, requirements and results](#)

[Site drainage systems: More than just water-tightness](#)

[Product test: IKT puts pressure on manhole lining](#)

[Product test: IKT-tested – adapter ring makes old manholes HGV-proof](#)

[Practice days: Sewer construction and rehabilitation](#)

[IKT Research & Testing 2012-2014](#)

IKT Research & Testing 2012-2014



DIN A4, 64 pages

May 2014

[Repair of main drains and sewers](#)

[Ten years of the IKT LinerReport](#)

[Crowded Underground – soil and in-fill material requirements](#)

[Managing the Crowded Underground](#)

[Decentralised treatment of stormwater](#)

[Optimising sewer cleaning](#)

[Handling of drainage-system water from private sites](#)

[Cooperation: Connecting North America and Europe](#)

[IKT Nederland: New contact in the Netherlands](#)

[IKT test centres reaccredited](#)

[**IKT Research & Testing 2012-2014**](#)

IKT Research & Testing 2010-2012



DIN A4, 68 pages

May 2012

[Large pipes: installation, operation and maintenance](#)

[Network Large Pipes and Sewers](#)

[Underground space: Utilisations in harmony](#)

[Waste-water manholes: Large-scale tests and in-situ studies](#)

[IKT-LinerReport 2011: CIPP liner quality reaches celebratory high level!](#)

[Inspection of pressure lines and culverts](#)

[Infiltration tightness: Pipes tight against infiltration, too!](#)

[Comparative Test: Connex sewer laterals with ball joint score "GOOD"](#)

[Comparative Test: REHAU Awadock Polymer Connect scores "VERY GOOD"](#)

[IKT approved: IKT tests new private-site manhole – Verdict: Infiltration-proof!](#)

[IKT approved: Flushing-resistant and infiltration-proof – Test successfully passed!](#)

[Bert Bosseler appointed "Privatdozent" by University of Hanover](#)

[IKT now also in Arnhem](#)

[**IKT Research & Testing 2010-2012**](#)

IKT Research & Testing 2008-2010



DIN A4, 64 pages

September 2010

[Current focus of action and perspectives](#)

[Acceptance of lining measures](#)

[Quality assurance in pipe-jacking](#)

[Shallow covered waste-water pipes](#)

[Sewer construction: Functions of bedding and filling materials](#)

[Heat from waste-water](#)

[Why Comparative Test?](#)

[Comparative Test: Competition moves up to the test winner](#)

[Comparative Test: Repair systems – Better than their reputation!](#)

[Comparative Test: Odour-filter – no smell capacity](#)

[IKT Research & Testing 2008-2010](#)

IKT Research & Testing 2004-2008



DIN A4, 92 pages
April 2008

[IKT-LinerReport 2007: An improvement over last year](#)

[1:1 simulation of pipe-jacking](#)

[Geophysics: Pipe and Soil are one system](#)

[Inspection of partially filled sewers](#)

[Large profiled plastic pipes: Practical experience and test concepts](#)

[Pipes under pressure](#)

[Waste-water culverts: The forgotten feature](#)

[Recovery of heat from waste-water](#)

[Manhole Coating: An Alternative Renovation Method?](#)

[Jetting damage risk: Product tests help to avoid surprises](#)

[Root intrusion in sewers](#)

[Pipe tests under near-realistic stresses](#)

[Comparative Test: Lateral liner wanted: fitted, no crease and tight](#)

[Comparative Test: Inspection-Systems for Domestic Sewer Networks](#)

[Nozzle drop test](#)

[IKT Research & Testing 2004-2008](#)

Reports, Journals, Conference Proceedings



Repair of Lateral Connections

[Testing Top Hat Liners and Robotic Systems for Repair of Lateral Connections](#)

[Comparative Test: CIPP Liners for Lateral Pipes](#)

[Comparative Test “Inspection-Systems for Domestic Sewer Networks”](#)

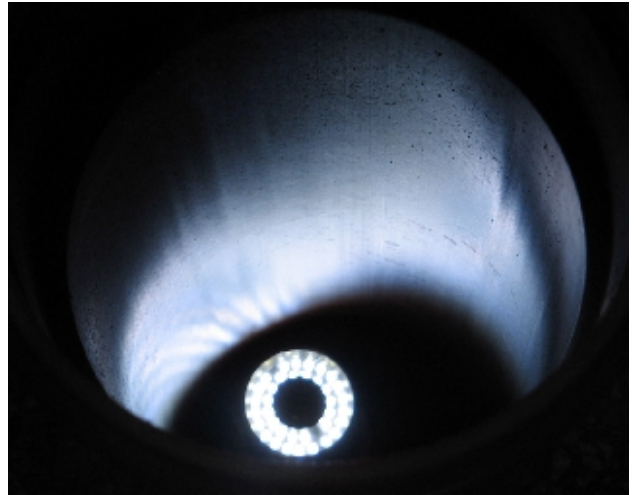
[Reducing extraneous water: detection and condition assessment of leaking private sewers](#)

Int. Conference on operation and maintenance of sewer and water pipes

EWA-European Water Association, Pollutec, 12/2003

[Methods for detection and condition assessment of domestic sewer systems](#)

Workshop DFG research group “Sewer Defect Characterization by Multi-sensor Systems”, Karlsruhe, 11/2002



Inspection cameras throw light on dark places

[Sewer TV Inspection – a tool to gain more detailed information about sewer infiltration flow from private house connections](#)

12th European Water Symposium, IFAT 2002, München, 05/2002

[Jacking of Precasted Rectangular Reinforced concrete Pipes](#)

17th International Congress of the Precast Concrete Industry, BIBM 2002, Istanbul, 05/2002

[Operations Management System for Water Management Plants](#)

IWA World Water Congress, International Water Association, Melbourne, 04/2002

[Adaptive Cleaning of Sewers](#)

IWA World Water Congress, International Water Association, Berlin 2001

[Jacking of Rectangular Reinforced Concrete Pipes](#)

IWA World Water Congress, International Water Association, Berlin 2001