

# IKT Comparative Test “Odour filters”



What will help against nasty smells from sewers?

In the summer months, in particular, odour emissions from sewers cause odour nuisances and thus higher levels of complaints from residents. Sewer-system operators are in general obliged to find a remedy for such problems.

Odour filters installed in waste-water manholes are coming into increasing use. In addition, further products which release special active ingredients in the waste-water manhole shaft are also used. The aim of this Comparative Test was that of testing the odour filters for waste-water manholes available on the market together with the participating sewer-system operators for their fluid permeability, cleaning performance and easy usability, and to perform a comparative assessment of their quality. Products which release special active ingredients into the waste-air leaving such waste-water manholes for the suppression of such odours were also tested.

## Title

IKT Comparative Test “Odour filters”  
with supplementary testing of other products for use in waste-

water manhole shafts in case of odour nuisance

## Downloads

(German versions only)

Table of results

Test Report (127 pages)

Short Report (31 pages)

## Clients

- Kiel (capital of state of Schleswig-Holstein) – urban drainage utility
- City of Ahaus
- City of Frankfurt am Main
- Hamm urban drainage utility (Lippeverband water authority)
- Hannoversch Münden urban drainage utility
- Ludwigshafen urban drainage utility
- Cologne urban drainage utilities
- Düsseldorf urban drainage utility
- Magdeburg municipal utilities
- Leverkusen municipal utilities
- Burscheid municipal utilities

## Comparative Test participants

- University of the German Federal Armed Forces, Munich, Institute of Water Resources
- University of Stuttgart, Institute for Sanitary Engineering, Water Quality and Solid Waste Management (ISWA)
- University of Kassel, Department of Urban Water Management within the Institute for Water, Waste and Environmental Management (IWAU)

# Contact

**Thomas Brüggemann**

**Dipl.-Ing.**

T: +49 (0) 209 17806-18

E: [brueggemann@ikt.de](mailto:brueggemann@ikt.de)

---

## IKT Comparative Test “Sewer lateral liners 2010”



Overview: Samples from the Comparative Test, showing liners, pipe and escaped resin

IKT has investigated the material quality and practical usability of CIPP liner products for sewer laterals in the context of an extensive programme of tests. Practically orientated tests performed in the test pipes at the IKT's large-scale test facility were the focus of this programme. The IKT Comparative Test “Sewer lateral liners” provides drain/sewer operators with reliable and impartial information on the product properties of commercially available

refurbishing procedures.

## Title

Comparative testing of the quality of refurbishing methods for sewer laterals II

## Downloads

(German versions only)

Table of results, "Standard situation"

Table of results, "Extreme situation"

Test report (188 pages)

Short report (34 pages)

## Client

Ministry for the Environment, Agriculture, Nature Conservation and Consumer Protection of the German Federal State of NRW

## Participating sewer-system operators



6 x 6 pipes: Layout of the test lengths in IKT's large-scale test facility

- Stadtwerke Aachen AG (municipal utilities)
- City of Alsdorf municipal technical utilities
- City of Bielefeld
- Bocholt disposal and service utility
- City of Datteln
- City of Detmold
- Düsseldorf urban drainage utilities
- Stadtwerke Essen AG (municipal utilities)
- City of Gladbeck
- Göttingen urban drainage utility
- City of Hilden
- Cologne urban drainage utilities
- City of Lemgo
- City of Monheim-on-the-Rhine
- Schwalmthalwerke municipal utilities
- KOWA Vorsfelde and district water authority
- Wuppertaler Stadtwerke AG municipal utility

## Contact

**Serdar Ulutaş**

**Dipl.-Ing. (FH), MBA**

T: +49 (0) 209 17806-32

E: [ulutas@ikt.de](mailto:ulutas@ikt.de)

---

# IKT Comparative Test

## “Repair methods for main

# sewers”



Layout of the test lengths:  
Pipes with built-in faults

Many waste-water system operators are unsure of what can be achieved by main sewer repair methods and what quality is attainable. Twelve different techniques from the three groups of methods: “Injection/grouting + injection methods”, “Short-liners” and “Internal sleeves” have been comparatively tested under defined and replicable conditions using the IKT Comparative Test “Repair methods for main sewers”. The principal focus was the testing of the techniques in IKT test rigs under conditions approximating to actual practice. The IKT Comparative Test provides reliable and impartial information on the quality of the techniques tested and statements concerning the general suitability of the individual techniques and method groups

## Title

IKT Comparative Test “Repair methods for main sewers (DN 200 – DN 600)”

## Downloads

(German versions only)

Table of results

Test Report (155 pages)

Short report (30 pages)

Test Report "Validation of the adhesion properties of short-liners on variously pre-treated substrate surfaces and the use of selected repair methods under external water pressure" (99 pages)

## Clients

- Ministry for the Environment, Agriculture, Nature Conservation and Consumer Protection of the German Federal State of North Rhine-Westphalia
- Environment ministry of the State of Baden-Württemberg
- City of Dortmund waste-water utility
- City of Willich waste-water utility
- Troisdorf waste-water utility
- Bergisch Gladbach waste-water utility
- City of Bad Honnef waste-water utility
- Castrop-Rauxel EUV municipal utility
- Göttingen disposal utility
- InfraStruktur Neuss
- Munich urban drainage utility
- City of Herford
- City of Iserlohn
- City of Oberhausen and WBO Wirtschaftsbetriebe Oberhausen GmbH (municipal utility)
- City of Plettenberg
- Düsseldorf urban drainage utility
- Frankfurt am Main urban drainage utility
- Hagen drainage utility (SEH)
- Kamen urban drainage utility
- Reutlingen urban drainage utility (SER)
- Cologne urban drainage utilities
- Minden municipal utilities
- Espelkamp municipal utilities
- Stadtwerke Essen AG municipal utility
- Vellmar municipal utilities
- Burscheid municipal technical utilities

- Technische Werke Emmerich am Rhein GmbH municipal technical utilities
- City of Marl central municipal utility

## Contact

**Serdar Ulutaş**

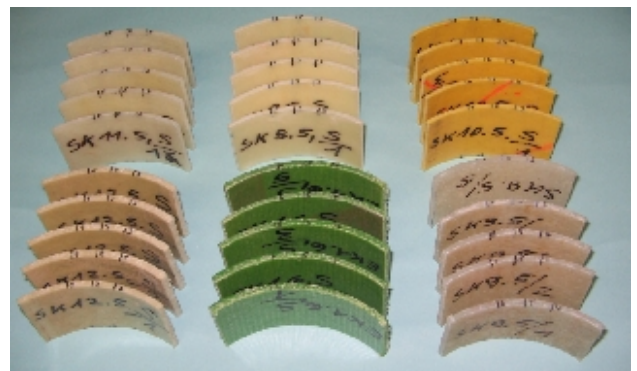
**Dipl.-Ing. (FH), MBA**

T: +49 (0) 209 17806-32

E: [ulutas@ikt.de](mailto:ulutas@ikt.de)

---

# IKT Comparative Test “Sewer lateral liners 2005”



Liner fragments: Samples taken for three-point bending tests

This IKT Comparative Test assesses the suitability and the practical usability of CIPP liners available on the market for sewer laterals. The central focus is on highly practically orientated comparison of the products, in order to be able to provide waste-water system operators with impartial and technically substantiated information on the strengths,



weaknesses and potentials/limitations for use of the products tested. The test programme itself has been developed jointly with the participating system operators.

## **Title**

IKT Comparative Test “Sewer lateral liners”

## **Downloads**

(German versions only)

Table of results “Standard situation”

Table of result “Extreme situation”

Test Report (122 pages)

Short report (22 pages)

## **Clients**

- City of Alsdorf municipal waste-water management utility
- City of Bergisch Gladbach waste-water utility
- City of Dinslaken
- Düsseldorf urban drainage utility
- City of Gladbeck
- Göttingen urban drainage utility
- City of Hilden
- Cologne urban drainage utilities
- City of Neuss
- Niederrheinische Versorgung und Verkehr AG (NVV; Lower Rhine regional supply/disposal and transport utility)
- Stadtwerke Quickborn (municipal utility)
- City of Recklinghausen
- Warendorf disposal utility
- Würzburg state civil-engineering department

with funding from the Ministry for the Environment, Agriculture, Nature Conservation and Consumer Protection of the German Federal State of North Rhine-Westphalia

# Contact

**Serdar Ulutaş**

**Dipl.-Ing. (FH), MBA**

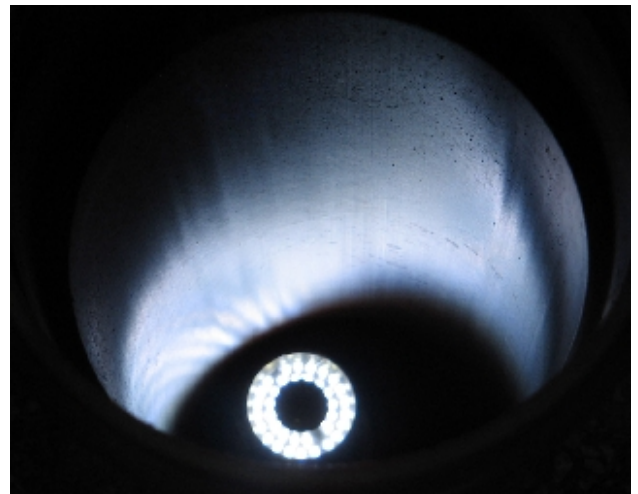
**T: +49 (0) 209 17806-32**

**E: [ulutas@ikt.de](mailto:ulutas@ikt.de)**

---

## **IKT Comparative Test**

### **“Inspection systems for site drainage networks”**



Inspection cameras throw light  
on dark places

This IKT Comparative Test clarifies how the various inspection systems for site drainage available on the market meet the demands placed on them and reveals specific strengths and weaknesses in each system. All the systems tested were found to be basically suitable for the inspection of site drainage networks.

# Title

IKT Comparative Test "Inspection systems for site drainage networks"

## Downloads

(German versions only)

Table of results

Test Report (98 pages)

Short report (14 pages)

## Clients



Cameras for sewer laterals must have flexing capability

- City of Alsdorf municipal waste-water management utility
- City of Bergisch Gladbach waste-water utility
- City of Dinslaken
- Düsseldorf urban drainage utility
- City of Gladbeck
- Göttingen urban drainage utility
- City of Hilden
- Cologne urban drainage utilities
- City of Neuss
- Niederrheinische Versorgung und Verkehr AG (NVV; Lower

- Rhine regional supply/disposal and transport utility)
- Stadtwerke Quickborn (municipal utility)
- City of Recklinghausen
- Warendorf disposal utility
- Würzburg state civil-engineering department

with funding from the Ministry for the Environment, Agriculture, Nature Conservation and Consumer Protection of the German Federal State of North Rhine-Westphalia

## Contact

**Serdar Ulutaş**

**Dipl.-Ing. (FH), MBA**

T: +49 (0) 209 17806-32

E: [ulutas@ikt.de](mailto:ulutas@ikt.de)

---

# IKT Comparative Test

## “Repair methods for sewer lateral connections”



Laterals all lined up: Test layout at the IKT large-scale facility

Damage to the lateral connections on main sewers is a frequent occurrence. Common types include intruding and detached damaged connecting lines and cracks and/or spalling around the lateral connections. Injection and top-hat section methods for the repair of sewer lateral connections have been tested to the limit in an IKT Comparative Test. The assessment criteria were the system tests performed by IKT in test lengths, the method suppliers' Quality Assurance measures, and on-site tests.

## **Title**

IKT Comparative Test "Repair methods for sewer lateral connections"

## **Downloads**

(German versions only)

Table of results "Injection methods for standard damage"

Table of results "Injection methods for extreme damage"

Table of results "Top-hat section methods for standard damage"

Table of results "Top-hat section methods for extreme damage"

Test report (175 pages)

## **Clients**

- City of Ahlen waste-water utility
- City of Alsdorf waste-water utility
- City of Beckum
- City of Bergisch Gladbach waste-water utility
- City of Braunschweig
- City of Dinslaken
- City of Dortmund
- Düsseldorf municipal drainage department

- City of Espelkamp
- Stadtwerke Essen AG municipal utilities
- City of Gladbeck
- Hamburg municipal drainage department
- City of Hamm
- City of Hemer
- City of Hilden
- City of Iserlohn
- Kamen municipal drainage department
- City of Kempen
- City of Monheim-on-the-Rhine
- City of Neuss
- Niederrheinische Versorgung und Verkehr AG (NVV, Lower Rhine municipal supply/disposal and transport utility)
- City of Recklinghausen
- City of Rietberg
- Troisdorf municipal utilities
- Tönisvorst municipal waste-water utility
- Warendorf municipal disposal utilities

## **Contact**

**Serdar Ulutaş**

**Dipl.-Ing. (FH), MBA**

**T: +49 (0) 209 17806-32**

**E: [ulutas@ikt.de](mailto:ulutas@ikt.de)**